

LI-7500 CO₂/H₂O Analyzer Software Update Instructions For Instrument (embedded) and Windows® Interface Software

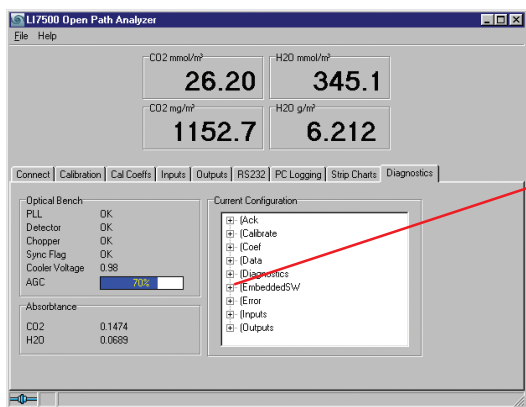
The following instructions detail the procedure for updating the instrument (embedded) and Windows® software for the LI-7500 CO₂/H₂O Analyzer.

The most current versions of the embedded and Windows software can be found on LI-COR's web site. Go to:

http://www.licor.com/env/Products/GasAnalyzers/7500/7500_software_downloads.jsp

Before starting this procedure, you might want to verify the version(s) of software that are currently installed on your instrument. To verify the Windows Interface Software version, simply start the **LI7500** program (the instrument does not need to be connected), and choose 'About' from the Help menu. The Windows software version is displayed in the 'About' dialog box.

To verify the instrument software version, the instrument must be connected to your computer, and powered on. Choose the COM port to which the instrument is connected, and click on the Connect button under the Connect tab. Click on the Diagnostics tab; in the Current Configuration box, click on the [+] sign next to 'EmbeddedSW' to view the instrument software version.



Click here to view the software version

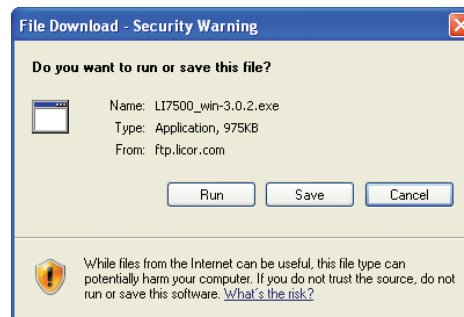
To avoid communication problems, LI-COR recommends that you update both the Windows and embedded software to their most current versions.

The Windows and instrument software can be updated in any order. Follow these instructions to update the software:

Windows Software:

1. Click on the LI-7500 Windows Interface Software link on the LI-7500 Software Downloads page (the link is given above). In the Security dialog that appears, you can choose to Run the software update, or Save the application to your com-

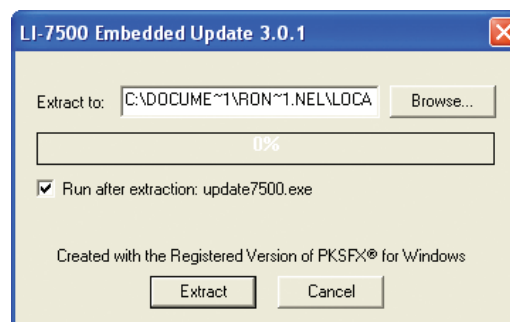
puter. Click **Run**. A second security warning may appear; click **Run** again. Follow the instructions to install the Windows Interface program.



2. If you have earlier versions of the Windows Interface program installed on your computer, you may have multiple program shortcuts on your desktop. Start the program and verify the version number in the 'About' dialog box as described above. You may want to delete any older program icons at this time.

Instrument (embedded) Software:

1. Click on the LI-7500 Instrument Embedded Software link on the LI-7500 Software Downloads page (the link is given above). In the Security dialog that appears, you can choose to Run the software update, or Save the application to your computer for installation at a later date. Click **Run**. A second security warning may appear; click **Run** again. If you are connected to the LI-7500 and want to run the update program, enable the 'Run after extraction' check box (below). If you are not connected, disable the check box, and you will be prompted for a location at which to save the file on your computer for later installation. Click **Extract**. Click **Yes** when prompted to run the update program.



2. Select the COM port to which the instrument is connected, and click the Update Software button. After the installation is finished, start the Windows Interface program and verify that you can connect to the instrument.